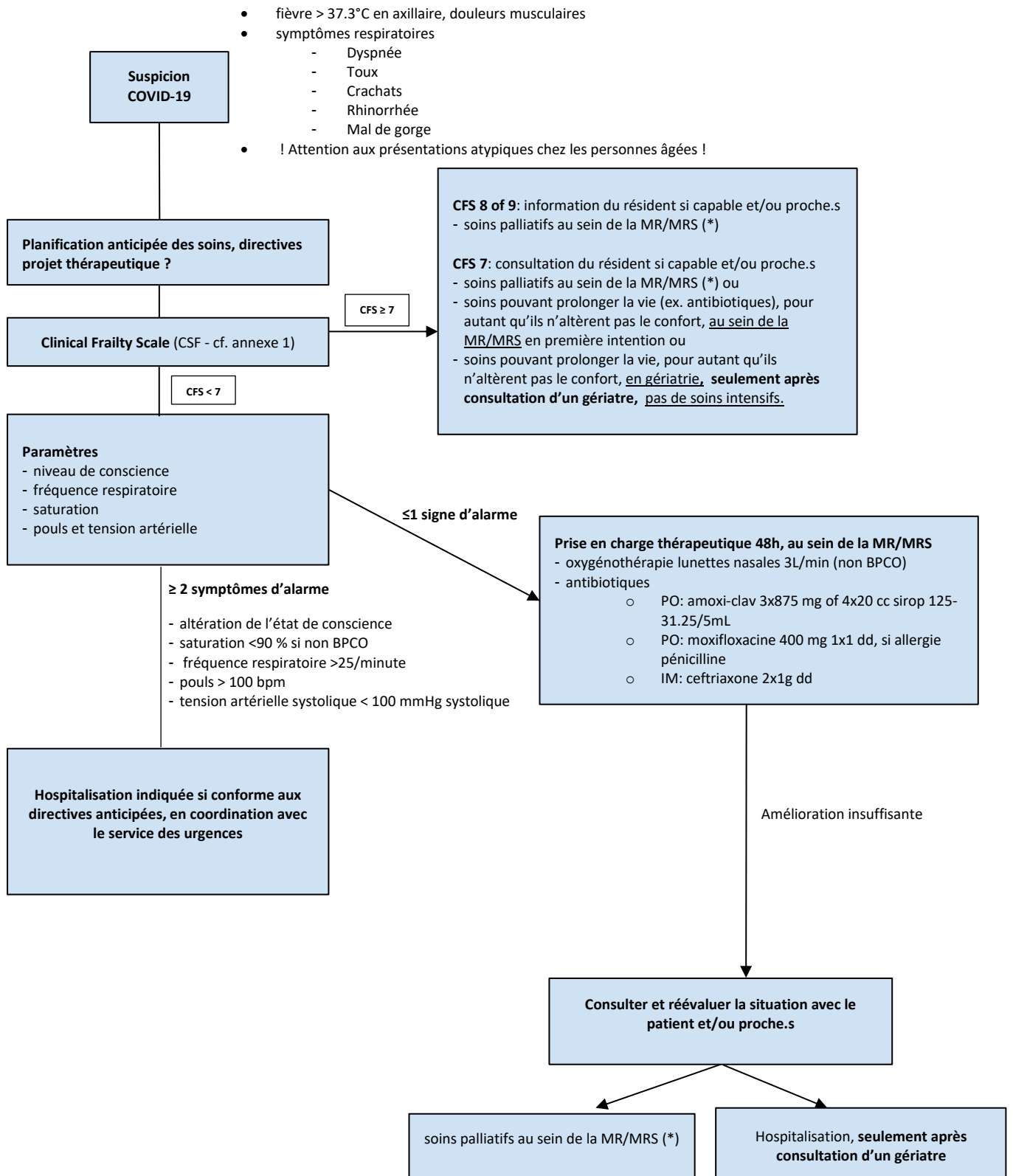


Arbre décisionnel suspicion COVID-19 résident MR/MRS



(*) Pour un soutien dans la gestion des symptômes inconfortables, vous trouverez de précieuses informations sur : www.palliaguide.be (en français) ou www.pallialine.be (en néerlandais)

Note : Mesures en cas de suspicion de COVID-19 en MRS : <http://www.iriscare.brussels/fr/2020/03/19/covid-19-coronavirus-consignes-aux-services-non-residentiels-agrees-et-subsventionnees-par-la-cocom/> ou auprès de l'AVIQ

Note: la réanimation cardio-pulmonaire n'est pas indiquée en MRS

Annexe 1: Clinical Frailty Scale (CFS) – situation avant la maladie aiguë actuelle

Clinical Frailty Scale*

-  **1 Very Fit** – People who are robust, active, energetic and motivated. These people commonly exercise regularly. They are among the fittest for their age.
-  **2 Well** – People who have **no active disease symptoms** but are less fit than category 1. Often, they exercise or are **very active occasionally**, e.g. seasonally.
-  **3 Managing Well** – People whose **medical problems are well controlled**, but are **not regularly active** beyond routine walking.
-  **4 Vulnerable** – While **not dependent** on others for daily help, often **symptoms limit activities**. A common complaint is being "slowed up", and/or being tired during the day.
-  **5 Mildly Frail** – These people often have **more evident slowing**, and need help in **high order IADLs** (finances, transportation, heavy housework, medications). Typically, mild frailty progressively impairs shopping and walking outside alone, meal preparation and housework.
-  **6 Moderately Frail** – People need help with **all outside activities** and with **keeping house**. Inside, they often have problems with stairs and need **help with bathing** and might need minimal assistance (cuing, standby) with dressing.



7 Severely Frail – **Completely dependent for personal care**, from whatever cause (physical or cognitive). Even so, they seem stable and not at high risk of dying (within ~ 6 months).



8 Very Severely Frail – Completely dependent, approaching the end of life. Typically, they could not recover even from a minor illness.



9. Terminally Ill - Approaching the end of life. This category applies to people with a **life expectancy <6 months**, who are **not otherwise evidently frail**.

Scoring frailty in people with dementia

The degree of frailty corresponds to the degree of dementia. Common **symptoms in mild dementia** include forgetting the details of a recent event, though still remembering the event itself, repeating the same question/story and social withdrawal.

In **moderate dementia**, recent memory is very impaired, even though they seemingly can remember their past life events well. They can do personal care with prompting.

In **severe dementia**, they cannot do personal care without help.

* 1. Canadian Study on Health & Aging, Revised 2008.
2. K. Rockwood et al. A global clinical measure of fitness and frailty in elderly people. CMAJ 2005;173:489-495.

© 2007-2009, Version 1.2. All rights reserved. Geriatric Medicine Research, Dalhousie University, Halifax, Canada. Permission granted to copy for research and educational purposes only.